

Huntron Workstation Tracker 3200S Tutorial

HUNTRON WORKSTATION TRACKER 3200S TUTORIAL.....	1
HUNTRON WORKSTATION SOFTWARE TUTORIAL FOR TRACKER 3200S	3
Installation Instructions	3
Huntron Workstation Main Interface	4
The Toolbar	5
Hardware Setup	5
Using a Tracker 3200S	6
Manual Modes – Tracker and Scanner	7
Creating a Board Test	8
Converting a Test Created in Workstation 4.2	9
Building Procedures for a New Test	10
Creating a Board Database	10
Adding a New Sequence	11
Adding a New Component	12
Tree/Pin Tab	14
Adding a New Range	15
Scan Results	19
Viewing Signatures – Troubleshoot	20
Viewing Signatures Troubleshoot Report	21
Viewing Signatures – Right Click	23
View SigAssist Information	24
Component Scans Information	25
Component Scans – Right Clicking (Auxiliary menus)	26
Component Scans – Right Clicking (Auxiliary menus)	27
Component Scans – Right Clicking (Auxiliary menus)	28
Sequence/Component/Pin Editing – Right Click menus	29
Pin Editing – Right Clicking (Auxiliary menus)	30
Pin Editing	31
Huntron Workstation Buttons Feature	32
Technical Support	35

Huntron Workstation Software Tutorial for Tracker 3200S

It is very helpful if you have a working knowledge of Microsoft Windows prior to using Huntron Workstation.

You are allowed to create a backup copy of the software disk. *Your purchase agreement allows for copies to be made for backup purposes only- copying for distribution or resale is strictly prohibited.*

Installation Instructions

Refer to the Getting Started document included with the Tracker 3200S for complete instructions on software installation.

Uninstall any previous versions of Workstation prior to installing the new version.

Insert the Huntron Workstation DVD. The DVD should Autorun and begin the installation process. If your PC has Autorun disabled then open a browse window to the CD and select WorkstationSetup.exe. This will begin the installation process.

During the install you will be asked to install additional software for Access Probers.

Answer **NO** to these questions if you do not have an Access Prober.

If you purchased CAD Tools then install using the supplied CD. Follow instructions listed in the CAD Tools Tutorial.

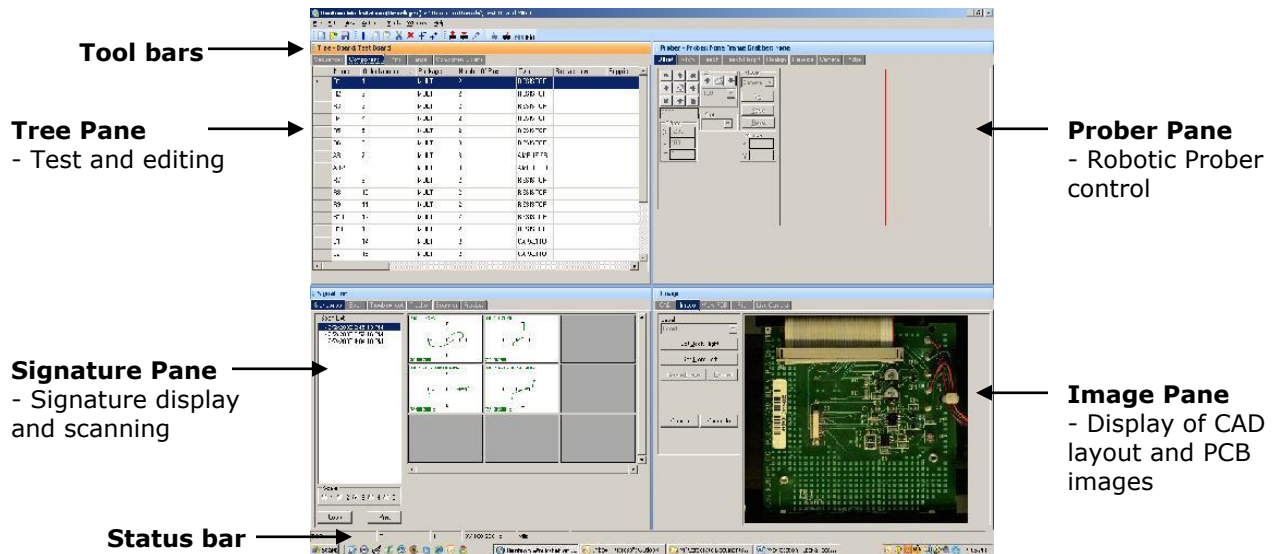
If you are using Workstation in conjunction with a digital multimeter, follow the instructions listed in the Workstation DMM Tutorial.

All of the Workstation tutorials are available on the Huntron web site:

www.huntron.com/sales-support/software.htm

Huntron Workstation Main Interface

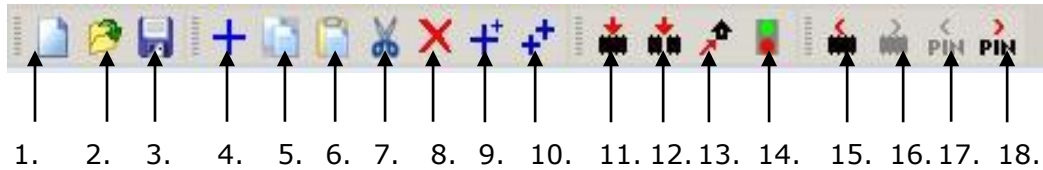
When starting Huntron Workstation for the first time, you will be prompted for an activation code. Type in the code exactly as it is presented on the installation CD. Huntron Workstation 4 has built-in conversion utilities that enable conversion of board tests created in 3.X versions of Huntron Workstation.



The Main Window for Huntron Workstation 4 features a multi-pane layout so many aspects of the test creation and execution can be displayed at the same time. The Panes are interactive to a certain degree in that changes in one Pane will affect other Panes. The Panes can be resized, floated independently or "tabbed" to the sides of the window. The Status Bar displays information about items currently selected and status information while processes are running.

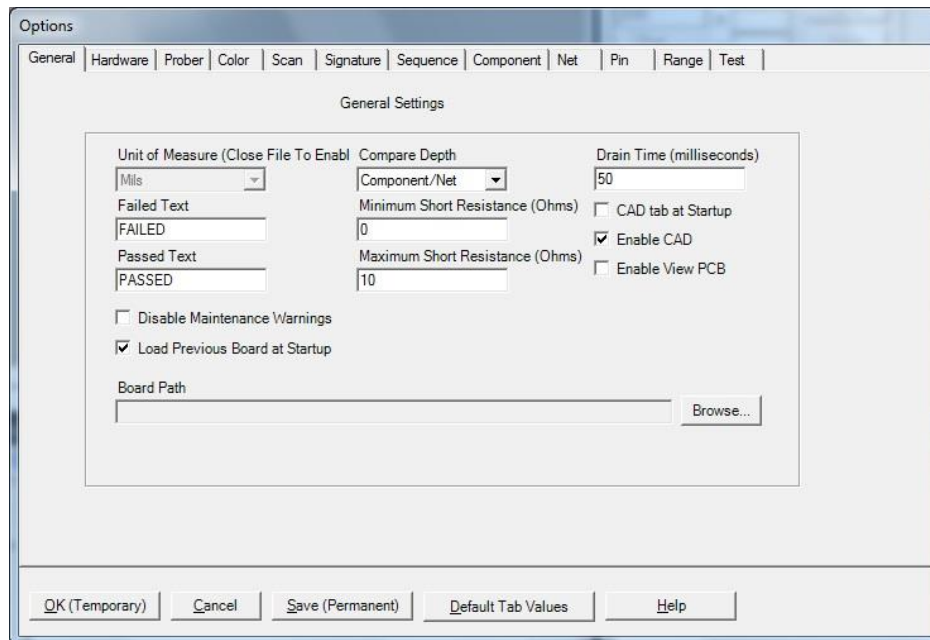
The Toolbar

The Toolbar just under the application menus allows for quick access to several program functions. The function of each is broken out in the diagram below.



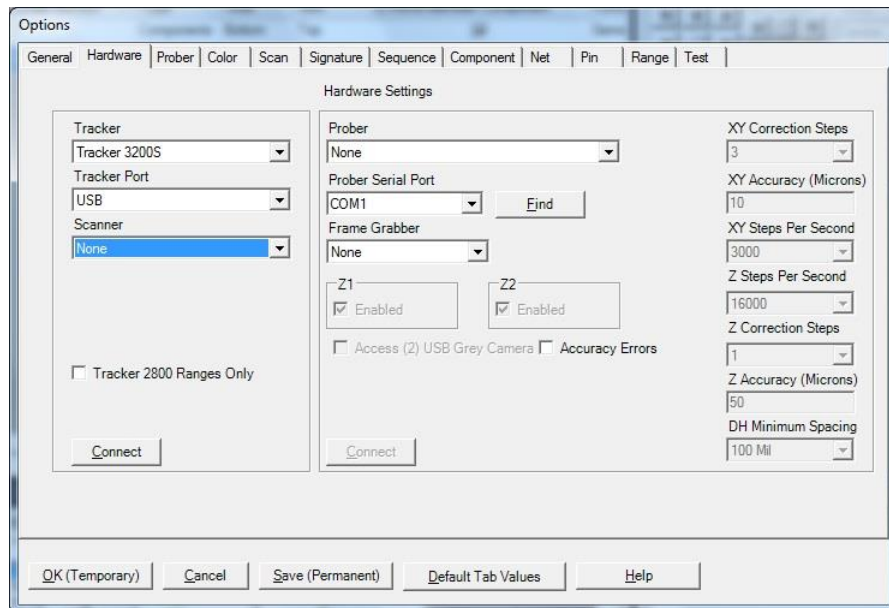
- | | |
|--|---------------------------------------|
| 1. Create New Board database | 10. Repeat New (Sequence, Component) |
| 2. Open Board database | 11. Scan Component or Net |
| 3. Save As... | 12. Scan Sequence |
| 4. Add New (Sequence, Component or Range) | 13. Send Prober head to Home position |
| 5. Copy (Sequence, Component, Net or Range) | 14. Connect/Disconnect Prober |
| 6. Paste (Sequence, Component, Net or Range) | 15. Previous Component or Net |
| 7. Cut (Sequence, Component, Net or Range) | 16. Next Component or Net |
| 8. Delete (Seq., Comp., Net, Range or Scan) | 17. Previous Pin |
| 9. Build New (Sequence, Component) | 18. Next Pin |

Hardware Setup



When first starting Huntron Workstation, select **Options** from the **Tools** menu. The Options window is used to setup default settings used when working in Huntron Workstation.

For this tutorial, the Tracker 3200S will be referred to in general as “Tracker”.



Select **Options** from the **Tools** menu. Select the **Hardware** tab and set the type of Tracker hardware as Tracker 3200S and the Tracker Port as USB. Disregard the Prober settings on the right side of the window.

Click the **Connect** button to initiate communication with the selected hardware. Once connected, the button changes to **Disconnect**. Click the **Save (Permanent)** button to save this configuration as the startup default.

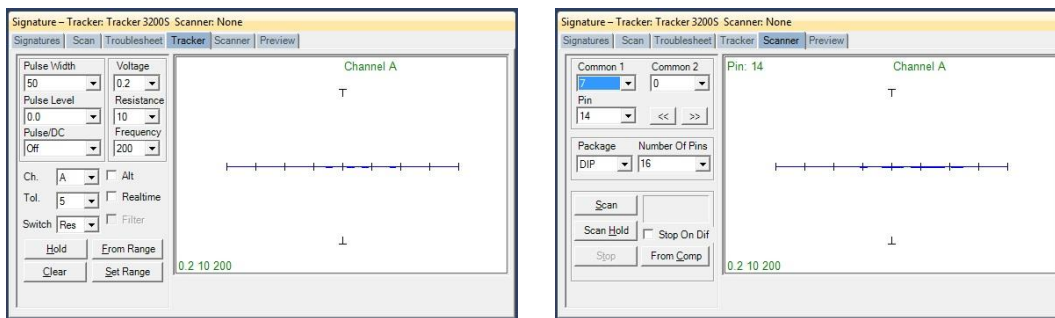
Using a Tracker 3200S

The Tracker 3200S comes from the Factory calibrated for standalone use. If the Tracker 3200S is connected to a Prober or through other cabling connected to the Scanner connections then calibration must be performed.

- Select **Tools/Maintenance/Tracker 3200S Diagnostics** from the menu.

Click the **Alignment** button the Tracker 3200S Diagnostics window. When the Alignment procedure finishes (about 10 minutes), run **Verify Alignment**. This also takes about 10 minutes to complete. The Alignment information is stored in the Tracker 3200S and will be used by the software. If changes are made to the cabling or attached instruments, simply run **Alignment** and **Verify Alignment** again.

Manual Modes – Tracker and Scanner



You may find it useful to manually test some of your components while adjusting the range parameters. The two manual modes, Tracker and Scanner located in the **Signatures** pane, can work together to display the signature of a component pin. Tracker mode sets the range parameters, channel, tolerance, footswitch and Pulse Generator settings. Signatures will be displayed to the right while probing with hand-held probes (select the **Realtime** check box). The **Hold** button will capture and hold the current signature allowing for quick comparisons. The **Clear** button will clear the "held" signature.

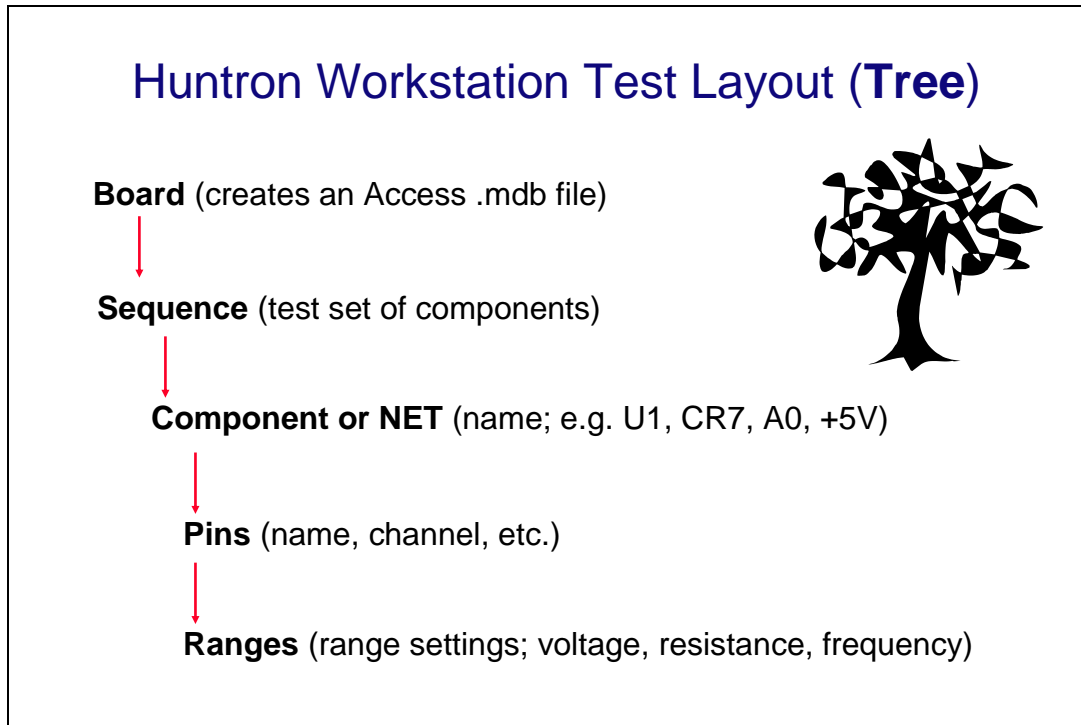
The **Pulse Width**, **Pulse Level**, **Pulse/DC** settings control the G1 and G2 outputs on the Tracker 3200S front panel. These outputs can be used to bias gated devices such as relays, SCRs and TRIACs.

Scanner mode allows you to use a Tracker 3200S Scanner connections to interface to the component pins. You can set the package type, number of pins and common pins. The **Scan** button starts a hands free scan of the component through the scanner cable interface or you manually increment the pins with the << and >> buttons. The **Hold** button will capture and hold the current signature allowing for quick comparisons.

Manual modes are for real time display only and does not allow for permanent signature storage. To store signatures you will need to create a **Board Test**.

Creating a Board Test

There are a number of steps necessary to creating a board test.



Example of Board Test Information:

Board Name: Main Board (creates "main board.mdb" file)

Revision: Rev. A (This field is optional)

Sequence: IC's

Component: U27 (component name) or A2 (NET name)

Pins: per pin settings for Scan Pin setting, channel, net name, etc...

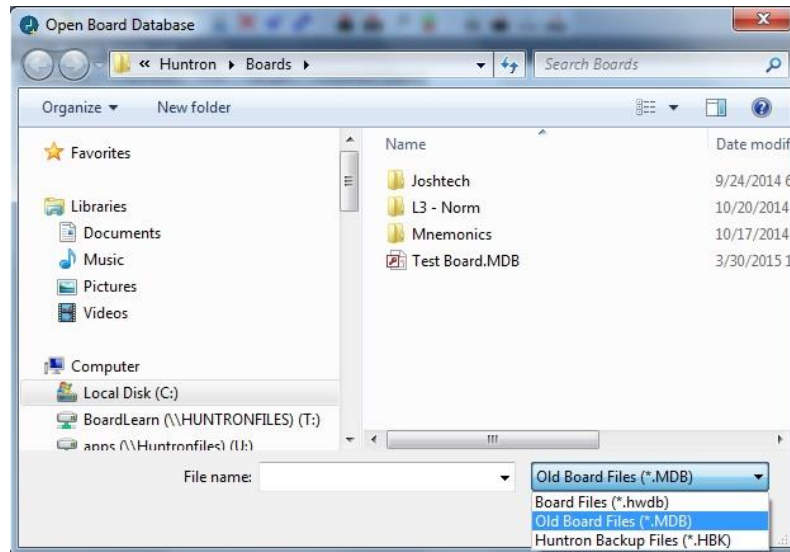
Ranges: Per pin settings for common reference pin, tolerance, etc...

The user has total discretion as to the information input into these fields. There is no "right" way as to what information is entered as every user's situation will be different. The above example is just one way the information might be entered.

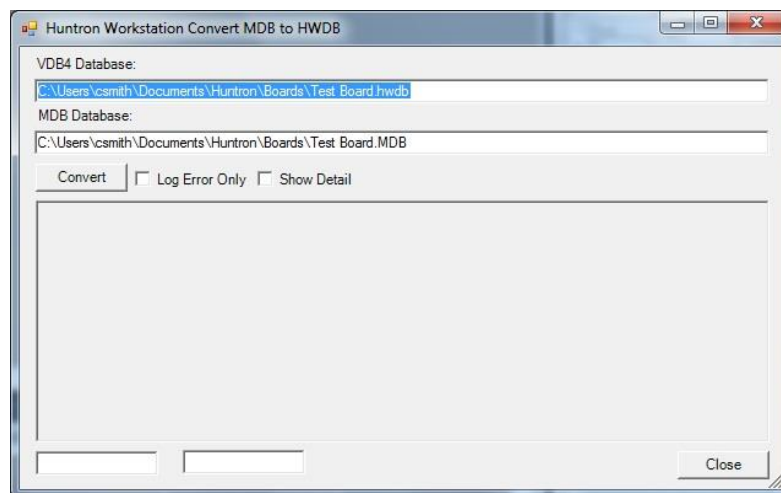
Entering information into the Entry windows is very straight forward. The easiest way to move from field to field is by pressing the **TAB** key. You can also use the mouse to click into a particular field so you can enter information.

Converting a Test Created in Workstation 4.2

Workstation 4.3 uses a different database type than version 4.2. To update a version 4.2 test to work in version 4.3, select **Open** from the **File** menu. The Open window, select **.MDB** from the file type drop menu. Select the .MDB test file name and click the **Open** button.



Click the **Convert** button to create the new test for version 4.3. The conversion can take some time based on the original test size.



Click the **Close** button when the conversion is complete. The updated test will be opened in the Workstation interface.

Building Procedures for a New Test

- Create Test Database in the Tree Pane
 - o Add Board, Sequence, and Components before teaching or scanning
- Scan Components and Set References (Tracker only or Tracker/Scanner users)

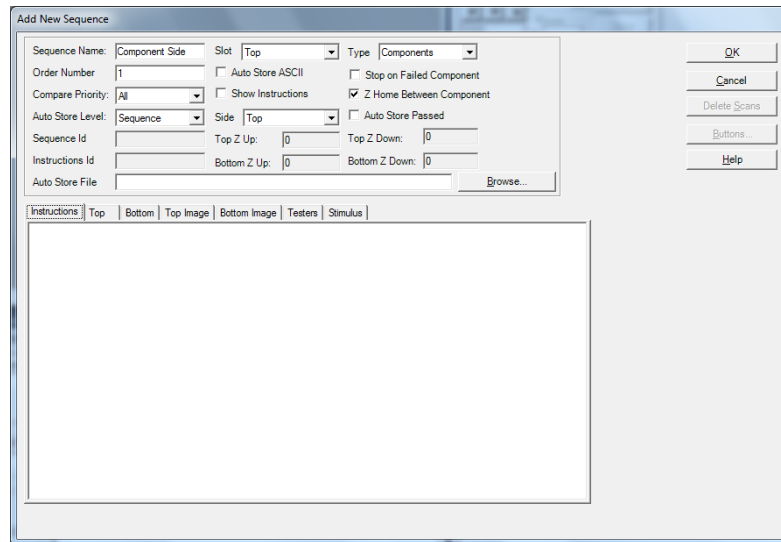
Listed above is a general outline on how you would proceed when preparing to test a board. These guidelines apply to all package types and boards. As with any type of complex test equipment, practice makes perfect so take the time to learn and practice these procedures.

Creating a Board Database

The screenshot shows the 'Add New Board' dialog box. It has a title bar 'Add New Board'. Inside, there are two columns of input fields. The left column contains: Name (Power Supply), Revision, System (Controller), Unit, Top Name (Top), and a checkbox 'Show Instructions'. The right column contains: Manufacturer (Huntron), Test Routine Number, Unit of Measure (Mils), Data Source (User), Bottom Name (Bottom), Instructions Id, and CC File Id. Below the 'Show Instructions' checkbox are two buttons: 'Load CC File...' and 'Remove CC File...'. To the right of the input fields are four buttons: 'OK', 'Cancel', 'Buttons...', and 'Help'. At the bottom of the dialog, there are two tabs: 'Instructions' and 'Prober'. The 'Instructions' tab is currently selected, showing a large empty text area.

To create a new Board, select **New** from the File menu or use the **New** button in the toolbar. Input information into the "Add New Board" dialog as needed. The only field that is required is board **Name**. Other fields such as Revision, System, Unit, Manufacturer, Test Routine Number can be completed with related information if desired. Instructions can be added in the Instruction field now or added later.

Adding a New Sequence



To add a new Sequence, select the **Sequence** tab in the Tree pane. Select **Add New Sequence** from the Edit menu or click the Add New button (+) in the toolbar.

Primary Details:

Sequence Name Field: Enter Sequence name

Compare Priority: Selects the comparison priority of signatures to Reference signatures between **Same** (serial number as Reference), **All** (All References; this is the recommended setting) or **Merge** (Merged min/max signatures)

Slot: This selection is used with Access Probers.

Type: Components or **Nets**. Select **Components** for most tests as Net tests are usually created using CAD data.

Side: This selection is used with Access Probers. **Top** is the default.

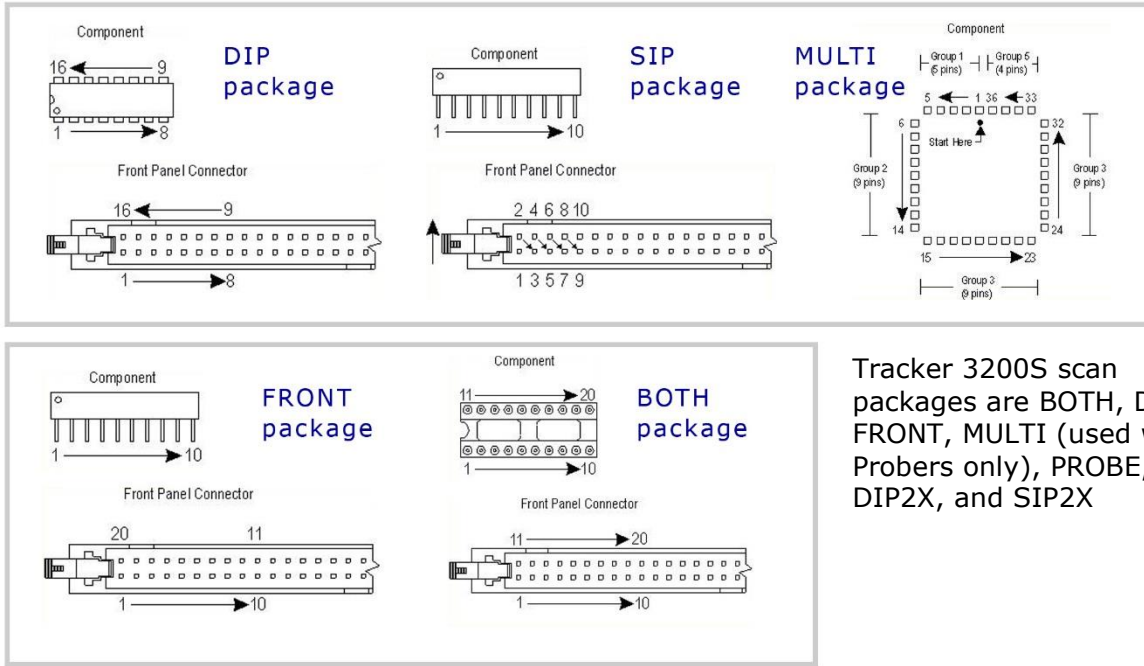
Instructions field: Enter any instructions or system information that you wish to pass on to future users. Note: the **ENTER** key in this field will work as a carriage return.

The **Delete Scans** button will erase all scans stored under the Sequence.

Other functions within this window can be read about by clicking the **HELP** button.

Adding a New Component

Component Package Types



Tracker 3200S scan packages are BOTH, DIP, FRONT, MULTI (used with Probers only), PROBE, SIP, DIP2X, and SIP2X

When adding a new component to your test the package type determines how the front panel Scanner connection pins are counted. The available Scanner packages are **Both, DIP, Front, Probe** (uses manual test probes), **SIP, DIP2X** (combines the A and B channels for 128 pins) and **SIP2X** (combines the A and B channels for 128 pins). There are other packages listed (i.e. Multi, Cable) in the Package drop menu that are used with other Huntron hardware.

To add a new Component, select the **Component** tab in the Tree pane. Select **Add New Component** from the Edit menu or click Add New button (+) in the toolbar.

Details:

Component Name field: Enter the component name (reference designator) in this field.

Package and **Number of Pins** fields: Using the mouse, click on the down arrow to the right of the field to bring up the pull-down menu. Select the package type and number of pins from these menus.

Type field: This information is optional but you can enter the component type in this field.

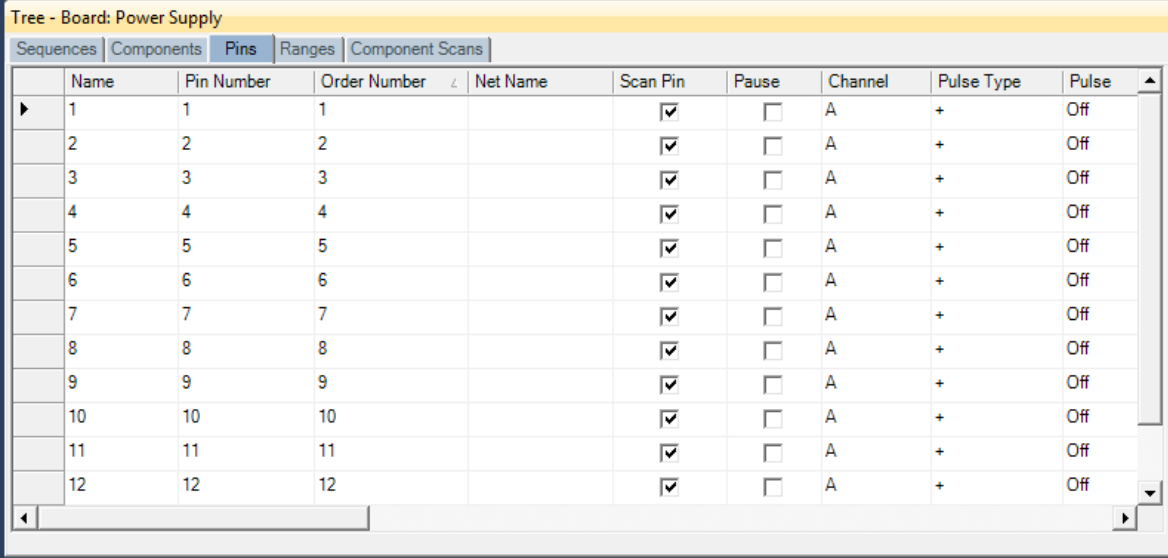
Connection Type: Select the type of hardware used to interface to the component. Select **Probes** if manual probes will be used or **Scanner** if the front panel Scanner connections will be used.

Instructions field: Enter any instructions or component information that you wish to pass on to future users.

Other functions within this window can be read about by clicking the HELP button. Click the **OK** button to close the Edit window.

Tree/Pin Tab

Once a component is added to the Workstation Tree, switching to the Pin tab will display information for each pin of the selected component.



	Name	Pin Number	Order Number	Net Name	Scan Pin	Pause	Channel	Pulse Type	Pulse
▶	1	1	1		<input checked="" type="checkbox"/>	<input type="checkbox"/>	A	+	Off
	2	2	2		<input checked="" type="checkbox"/>	<input type="checkbox"/>	A	+	Off
	3	3	3		<input checked="" type="checkbox"/>	<input type="checkbox"/>	A	+	Off
	4	4	4		<input checked="" type="checkbox"/>	<input type="checkbox"/>	A	+	Off
	5	5	5		<input checked="" type="checkbox"/>	<input type="checkbox"/>	A	+	Off
	6	6	6		<input checked="" type="checkbox"/>	<input type="checkbox"/>	A	+	Off
	7	7	7		<input checked="" type="checkbox"/>	<input type="checkbox"/>	A	+	Off
	8	8	8		<input checked="" type="checkbox"/>	<input type="checkbox"/>	A	+	Off
	9	9	9		<input checked="" type="checkbox"/>	<input type="checkbox"/>	A	+	Off
	10	10	10		<input checked="" type="checkbox"/>	<input type="checkbox"/>	A	+	Off
	11	11	11		<input checked="" type="checkbox"/>	<input type="checkbox"/>	A	+	Off
	12	12	12		<input checked="" type="checkbox"/>	<input type="checkbox"/>	A	+	Off

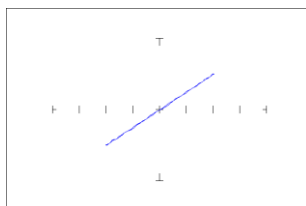
Text in the **Name** field can be modified directly by clicking in the text field and typing the new name. The **Scan Pin** setting enables or disables scanning of the pin. **Pause** will cause the scan to pause when the selected pin is reached. The **Channel** field controls which channel (**A or B**) is used. Controls for the Tracker Pulse Generator can also be controlled at the Pin level. These control include **Pulse Type** (polarity), **Pulse** (on/off), **Pulse Level** (amplitude) and **Duty Cycle** (up to 50% on pulsed signals). Consult the Tracker 3200S User's Manual for how the Pulse Generator is used. Information on the other settings in the Pin tab is available in the **Workstation Help**.

Adding a New Range

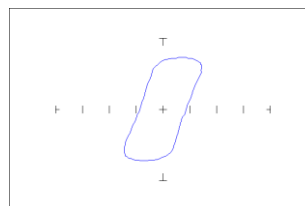
When a new component is added to a Sequence the ranges used are set by the defaults set up in the **Tools/Options/Ranges** tab. On a new software installation these defaults set three ranges – **3V, 50Kohms at 500Hz; 3V, 1Kohms at 200Hz** and **3V, 50 ohms at 60Hz**. In general use, these three ranges will work well but you may need to add or modify ranges based on component type and value. As a general reference, the table below can be used to assist you in setting ranges.

Range Impedance↓	Voltage> 200mV	3V	6V	10V -15V	20V
10Ω - 100Ω	continuity, shorts, caps, resistors & inductors	low impedance components	newer MOS ICs	power supply & regulators	
1KΩ - 10KΩ	resistive faults	latest MOS & surface mount ICs	newer MOS ICs	older MOS ICs	
20KΩ	resistive faults	resistive faults	older MOS ICs	TTL 74XXX & 74LSXXX ICs, older MOS Ics	TTL 74XXX ICs, power transistor
100KΩ	resistive faults	resistive faults	resistive faults	resistive faults	Hi resistance& Hi power

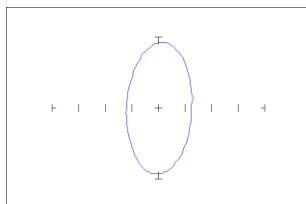
The Tracker signatures are shaped based on the Tracker range settings. The basic goal is to achieve signatures that are halfway between open and short. The signatures for the four basic types of components shown below illustrate this primary goal.



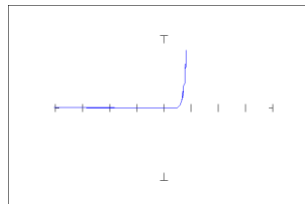
Resistance



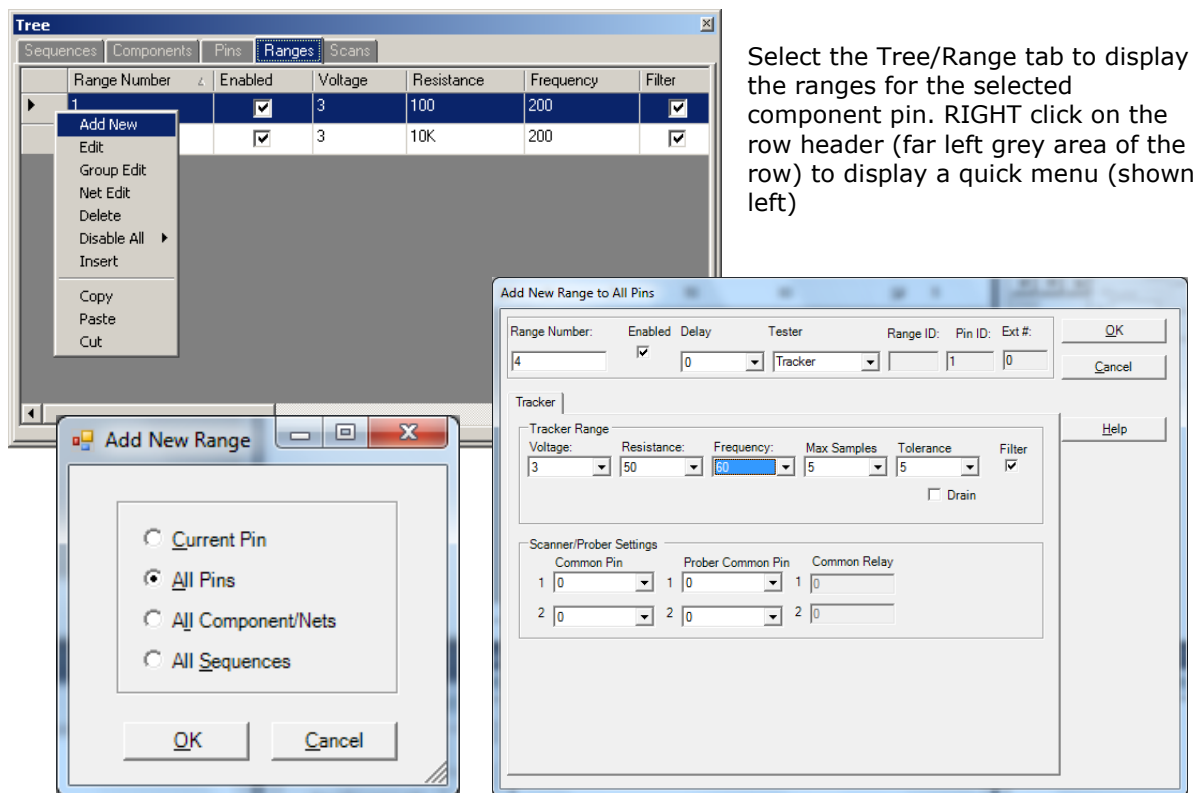
Inductance



Capacitance



Semi-conductance



To add a new Range, select the Range tab in the Tree pane. Select **Add New Range** from the Edit menu or click the Add New button (+) in the toolbar. A pop-up dialog will ask where you want the new range to be added. Select the desired radio button (**All Pins** is generally the desired selection) and click **OK**.

Add New Range Details:

Note: **Voltage/Resistance/Frequency** can be modified directly in the Range grid.

Voltage/Resistance/Frequency fields: Select the desired range settings

Max Samples/Tolerance/Delay: Select the setting to be used when scanning **this range**

Common Pin: Select Scanner common pins to be used when scanning **this range**.

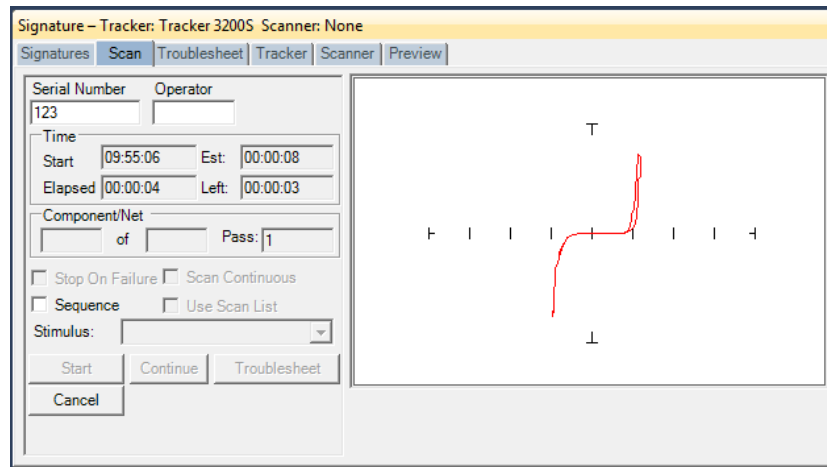
Scanner users wishing to use a particular component pin (i.e. ground pin) for Common should select the Common pin at this time using the **Common Pin 1 field** (the Common Pin 2 field is rarely used).

Note: It is easier to set up the ranges used by selecting **Tools/Options/Range** from the Tools menu in the menu bar and pre-configuring the default ranges.

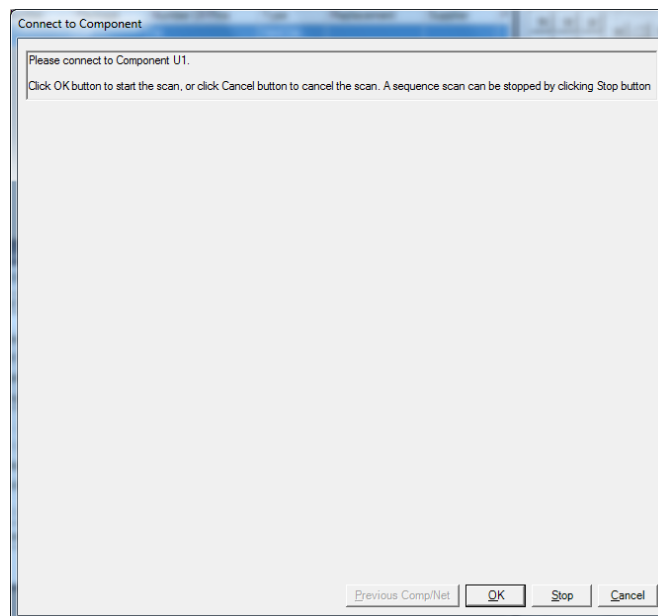
Scanning with a Tracker 3200S

To scan an entire Sequence, select the Sequence in the Tree/Sequence tab or enable the **Sequence checkbox** in the Scan tab. To scan an individual component, select the component in the Tree/Component tab.

Select the **Scan tab** in the Signatures pane and input a **Serial Number** then click the **Start** button.

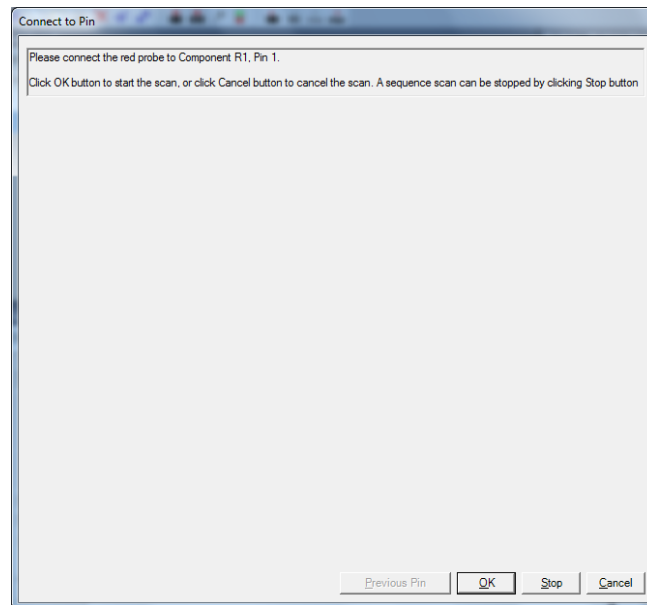


You will be prompted to connect to the component. Tracker with Scanner users should connect to the selected component at this time. Click **OK** to initiate the Scan.



If you are performing Sequence scan you will be prompted to continue to the next component until all of the components in the Sequence have been scanned.

If a Tracker with probes is being used you will be prompted to connect to pin 1 of the selected component (if performing a single component scan) or of the first component in the Sequence (if performing a Sequence scan). Click the **OK** button to scan the first pin. You will then be prompted to move to the next pin for scanning. Click **OK** to scan and continue in this manner until all of the component pins are scanned. At anytime during scanning you can click the **Previous Pin** button to go back and rescan the previous pin.

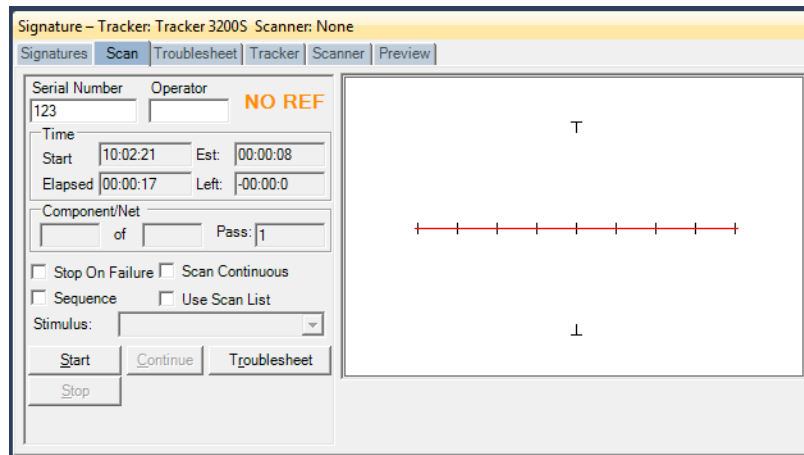


Once all pins are scanned click the **OK** button to continue.

When the Sequence or Component scan is complete the Scan Results window will be displayed. Go to the **Scan Results** section of this tutorial for more information on what to do after scanning.

If the Tracker Scanner connections are being used (i.e. DIP clip and cable) you will be prompted to Connect to the Component before the scan is executed. Connect the Scanner cable to the component to test and click **OK** to start the scan. Once the scan is complete, the Scan results will be displayed.

Scan Results

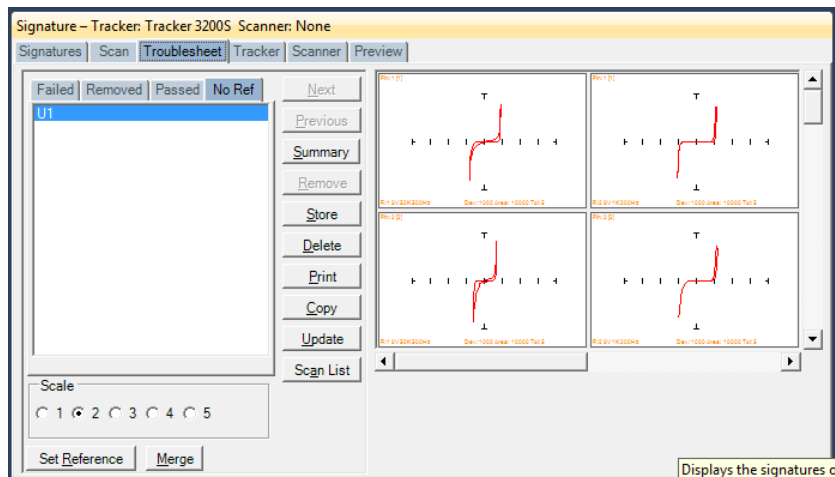


When a scan is complete, the results NO REF, PASSED or FAILED will be displayed (the text of the PASSED or FAILED message can be changed in the

Tools/Options/General settings). The NO REF message will be displayed on the first scan of any test since there are no signatures stored as a comparison Reference.

Clicking the **Troubleshoot** button will display the signature from the last scan in the Troubleshoot tab of the Signature pane.

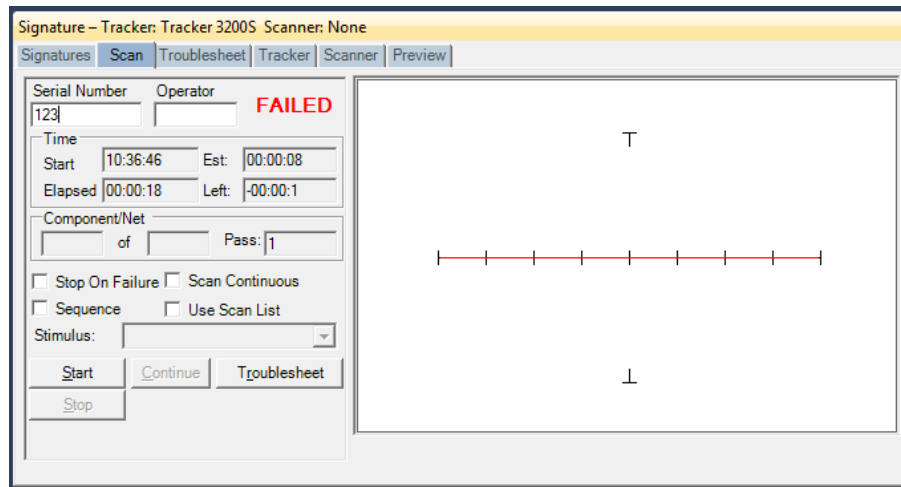
Note: Selecting the **Troubleshoot** tab will display Troubleshoot information from the previous scan.



The first NO REF scan will display signatures in red with orange text. Review the signature at this time. If the signatures meet your approval (always use a known good PCB) click the **Set Reference** button to mark these signature as a comparison Reference. The text will change to green when set.

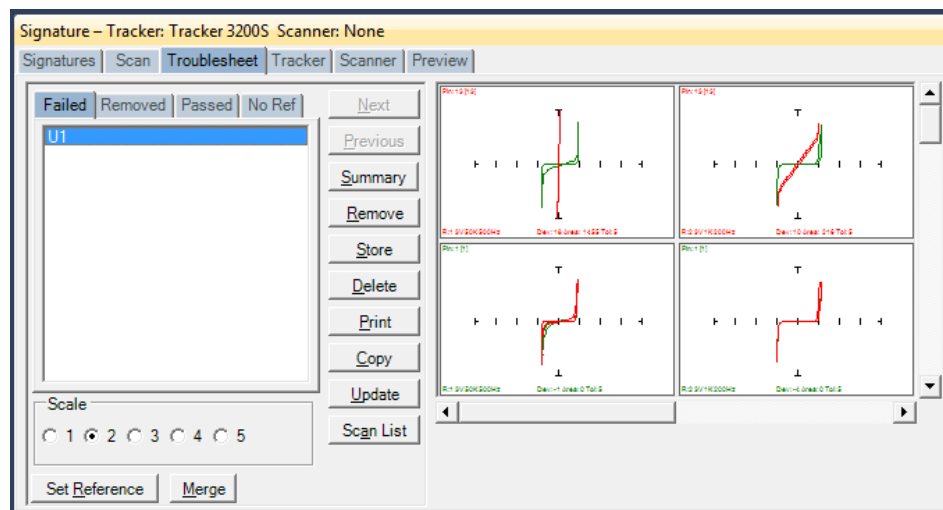
Viewing Signatures – Troubleshoot

Once a test has reference signatures stored, subsequent scans will compare to those references. The test results will be either PASS or FAILED.



Click the **Troubleshoot** button to see the test results.

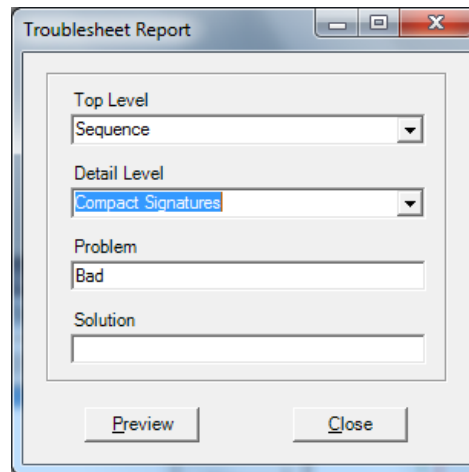
When a scan is executed and compared to the Reference signatures, the current scan signatures (in red) will overlay the reference signatures (in green).



Components that fail comparison will be listed under the Failed tab. Components that pass comparison will be listed in the Passed tab. You can remove components from the list by clicking the **Remove** button where they will be moved to the Removed tab and not included in any Troubleshoot reports. Use the **vertical scroll bar** to scroll through the scanned pins. Use the **horizontal scroll bar** to scroll the pin ranges especially if the viewing is set to **Pin** mode (see Viewing Signatures – Right Click section).

Viewing Signatures Troubleshoot Report

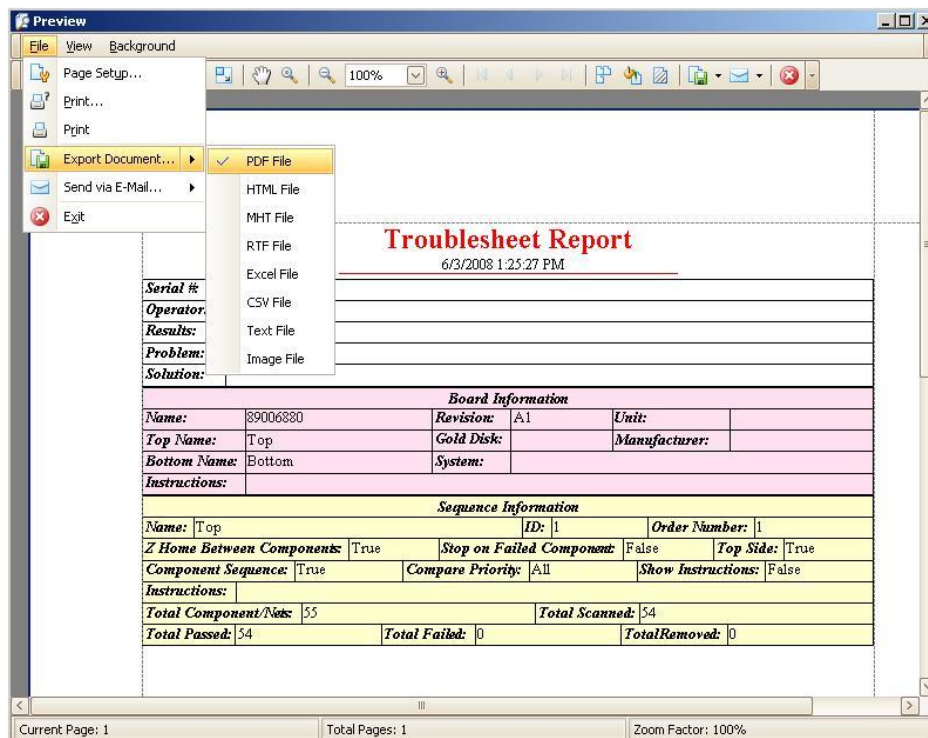
To view and print the Troubleshoot report, press the **Print** button in the Troubleshoot window.



The Troubleshoot Report dialog box contains the following fields and controls:

- Top Level:** A dropdown menu with "Sequence" selected.
- Detail Level:** A dropdown menu with "Compact Signatures" selected.
- Problem:** A text input field containing "Bad".
- Solution:** An empty text input field.
- Buttons:** "Preview" and "Close" buttons at the bottom.

You can select from several options including a Sequence or Component Level report, the level of detail and add problem and solution comments to the report. Click **Preview** to view the report on-screen.



The Preview window displays the Troubleshoot Report with the following sections and data:

File Menu: Page Setup..., Print..., Print, Export Document..., Send via E-Mail..., Exit.

Export Document Sub-menu: PDF File (checked), HTML File, MHT File, RTF File, Excel File, CSV File, Text File, Image File.

Report Content:

Troubleshoot Report
6/3/2008 1:25:27 PM

Serial #:	
Operator:	
Results:	
Problem:	
Solution:	

Board Information

Name:	89006880	Revision:	A1	Unit:	
Top Name:	Top	Gold Disk:		Manufacturer:	
Bottom Name:	Bottom	System:			
Instructions:					

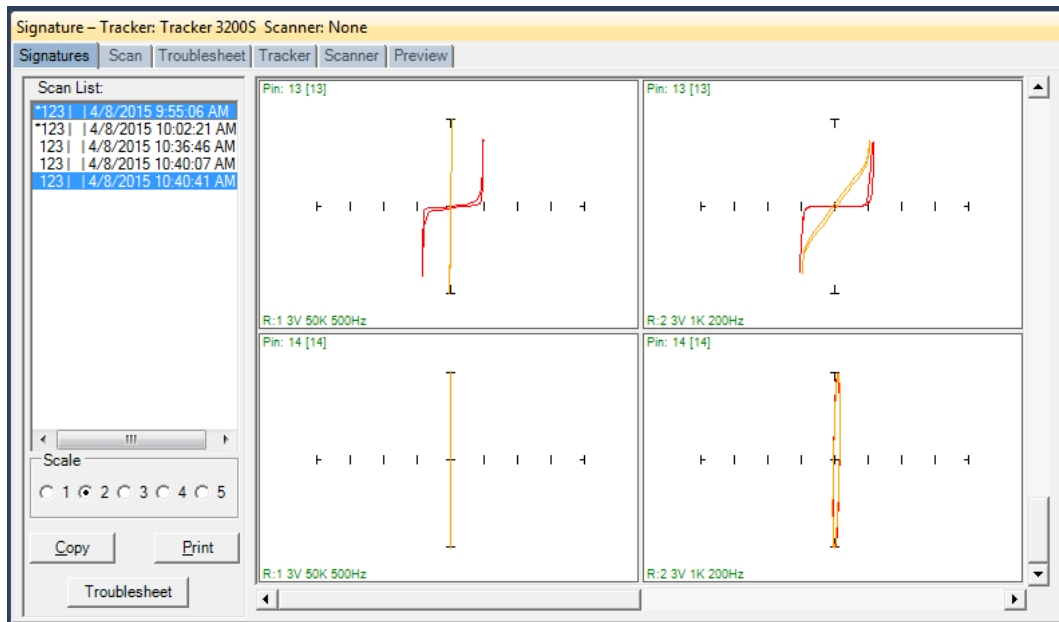
Sequence Information

Name:	Top	ID:	1	Order Number:	1
Z Home Between Components:	True	Stop on Failed Component:	False	Top Side:	True
Component Sequence:	True	Compare Priority:	All	Show Instructions:	False
Instructions:					
Total Component/ Nets:	55	Total Scanned:	54		
Total Passed:	54	Total Failed:	0	Total Removed:	0

Status Bar: Current Page: 1, Total Pages: 1, Zoom Factor: 100%

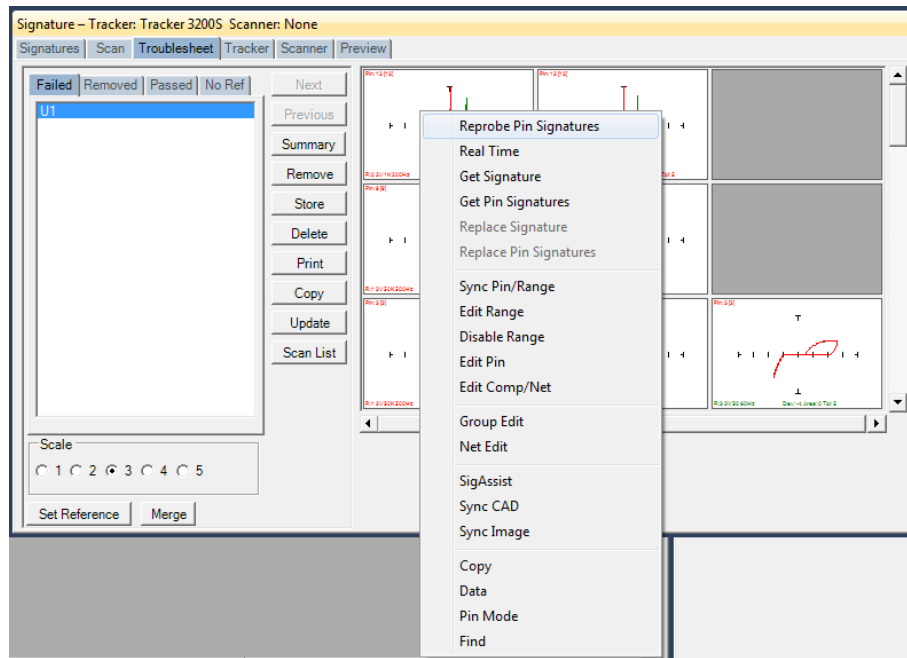
The report can be printed or exported in several different formats including HTML and PDF by selecting **File/Export Document** in the Preview window.

Viewing Signatures in the Signatures Pane



To view scanned signatures of the component selected in the Tree pane/Components tab, select the **Signatures** tab in the Signature Pane. The Scan name, date and time will be displayed on the left side of the window and signatures on the right. The **Scale** buttons will change the number of columns displayed. Scaling the window will increase the number of signatures displayed. The **Copy** button will copy the signatures to the Windows clipboard so they can be pasted into another program (in a metafile format). The **Print** button will print the signatures in one of several different user selected formats. The **Troubleshoot** button will switch to the Troubleshoot tab and display the Troubleshoot of the scan selected in the Scan List. You can use the keyboard **Shift** and **Ctrl** keys to select and stack signatures in the signature boxes (shown above). The signatures will be displayed in contrasting colors and can be very useful if you want to make general comparisons among different scans.

Viewing Signatures – Right Click



Additional options when viewing signatures can be displayed by right clicking in the signature area.

Reprobe Pin Signatures: Capture signatures for all displayed ranges and prompts to replace signatures immediately – available in Range mode only

Real Time: Display signature in real time

Get Signature: Capture signature for selected pin and range

Get Pin Signatures: Captures signature for all ranges – works only in Range Mode

Replace Signature: Replaces the current signature with the captured signature displayed for the selected pin, range and scan (shown in the Scan List to the left)

Replace Pin Signatures: Replaces the current signatures with the captured signatures displayed for the selected pin, all ranges and scan – works only in Range Mode

Sync Pin/Range: Selects pin and range in the Tree (see default in Tools/Options)

Edit Range: Selects the pin and range in the Tree and opens the Edit Range dialog

Disable Range: Disables the selected range (set in the Tree pane, Ranges tab)

Edit Pin: Selects the Pin the in the Tree and opens the Edit Pin dialog

Edit Comp/Net: Shortcut to the selected Component Edit dialog in the Tree pane

Group Edit: Opens Group Edit dialog for editing of component pin parameters as a group

Net Edit: Opens Net Edit dialog for editing of Net pin parameters as a group

SigAssist: Displays the SigAssist window showing calculated approximate values of resistance, capacitance, breakdown voltage, etc. based on signature information

Sync CAD: Will link the selected signature to the CAD image displayed in the Image/CAD pane. **Sync CAD** will be disabled if there is no linked CAD data.

Sync Image: Links current Troubleshoot to the image in the Image pane/Image tab

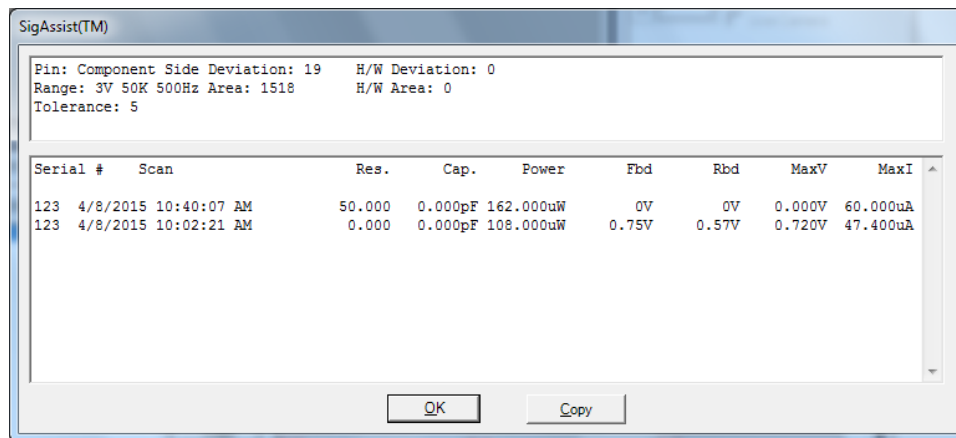
Copy: Places the signature image in the clipboard

Data: Displays the signatures numeric data

Range/Pin Mode: Displays signatures with Range priority or Pin priority - see default in Tools menu/Options/Signature tab)

Find: Searches for a specific component in the Troubleshoot list.

View SigAssist Information



The SigAssist window can be viewed by right-clicking on a displayed signature and selecting SigAssist. It appears as an additional pop-up window. The information presented relates to the individual scans displayed in the signature. The calculated resistance, capacitance, power, forward breakdown voltage (Fbd), reverse breakdown voltage (Rbd), maximum voltage and maximum current are displayed. These values are for troubleshooting purposes only and are not intended to be used as true measurements. The accuracy of the SigAssist values depends greatly on the scanned signature information. SigAssist values may not be calculated for signatures that do not contain enough information for reasonable calculations to take place (i.e. opens, shorts). The Copy button will put a copy of the window into the clipboard for use in other programs.

Component Scans Information

Tree - Board: Power Supply								
Sequences Components Pins Ranges Component Scans								
Serial Number	Operator	Scan Date Time	Stimulus Id	Merged	Reference	Passed	Removed	
123		Wednesday, April 08, 2015 10:02:21 AM	0	<input type="checkbox"/>	<input checked="" type="checkbox"/>	<input checked="" type="checkbox"/>	<input type="checkbox"/>	
123		Wednesday, April 08, 2015 9:55:06 AM	0	<input type="checkbox"/>	<input checked="" type="checkbox"/>	<input type="checkbox"/>	<input type="checkbox"/>	
123		Wednesday, April 08, 2015 10:36:46 AM	0	<input type="checkbox"/>	<input type="checkbox"/>	<input type="checkbox"/>	<input type="checkbox"/>	
123		Wednesday, April 08, 2015 10:40:41 AM	0	<input type="checkbox"/>	<input type="checkbox"/>	<input type="checkbox"/>	<input type="checkbox"/>	
▶ 123		Wednesday, April 08, 2015 10:40:07 AM	0	<input type="checkbox"/>	<input type="checkbox"/>	<input type="checkbox"/>	<input type="checkbox"/>	

Selecting the **Component Scans** tab in the Tree Pane will display all of the scans performed on the selected component in a table format. The Scan information displayed includes the serial number, operator, date/time, Merge setting (checked if this scan is included in the Merge set), Reference setting (checked indicates it is set as a comparison Reference), Pass status (will be checked if components passed comparison), Removed status (will be checked if component was removed from Troubleshoot), Area number (highest of scanned pins), Deviation, Min/Max status and other settings (see Help for more information).

Component Scans – Right Clicking (Auxiliary menus)

Tree - Board: Power Supply

Sequences Components Pins Ranges **Component Scans**

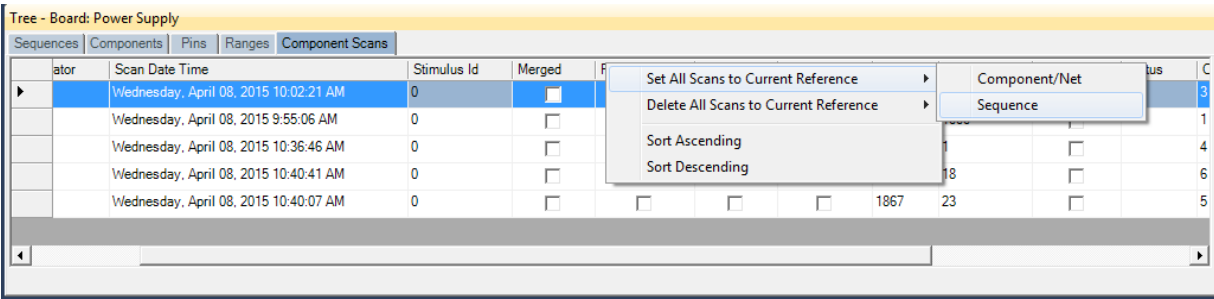
Serial Number	Operator	Scan Date Time	Stimulus Id	Merged	Reference	Passed	Removed
122		April 08, 2015 10:02:21 AM	0	<input type="checkbox"/>	<input checked="" type="checkbox"/>	<input checked="" type="checkbox"/>	<input type="checkbox"/>
		April 08, 2015 9:55:06 AM	0	<input type="checkbox"/>	<input checked="" type="checkbox"/>	<input type="checkbox"/>	<input type="checkbox"/>
		April 08, 2015 10:36:46 AM	0	<input type="checkbox"/>	<input type="checkbox"/>	<input type="checkbox"/>	<input type="checkbox"/>
		April 08, 2015 10:40:41 AM	0	<input type="checkbox"/>	<input type="checkbox"/>	<input type="checkbox"/>	<input type="checkbox"/>
		April 08, 2015 10:40:07 AM	0	<input type="checkbox"/>	<input type="checkbox"/>	<input type="checkbox"/>	<input type="checkbox"/>

Right-click context menu options:

- Enable Sequence Reference
- Disable Sequence Reference
- Delete Scan
- Delete Scan All Components/Nets
- Load Troubleshoot

Right clicking on the Row bar of the Component Scans tab displays an additional menu for performing specific tasks such as enabling/disabling References, deleting a scan for the selected components or all components and loading a Troubleshoot. **Enable Sequence Reference** will mark the scan as a Reference for the entire Sequence. **Disable Sequence Scan** will disable the selected Sequence as a reference. **Delete Scan** will erase the selected scan for the current component only. **Delete Scan All Components/Nets** will erase the selected scan for all components or nets in the Sequence. **Load Troubleshoot** will display the selected scan in the Signatures/Troubleshoot pane.

Component Scans – Right Clicking (Auxiliary menus)



Right clicking on the Column bar of the Component Scans pane displays an additional menu for performing specific tasks such as sorting or globally setting parameters. The menu will vary depending on the column selected. In the image above, the Reference column header was right-clicked.

This method is the easiest way to delete non-reference scans that are listed in the Tree/Component Scans pane. Select a scan that is a non-reference (the Reference check box is unchecked) the right-click the column as shown above. Select **Delete All Scans to Current Reference/Component/Net** or **Sequence** to delete the non-reference scans for the individual Component/Net or for the entire Sequence.

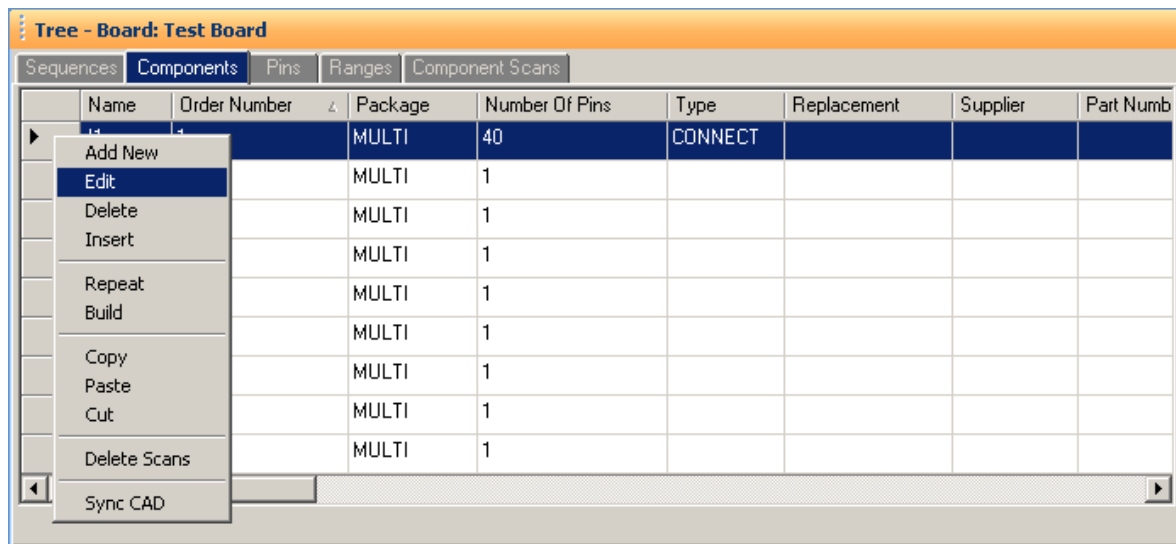
Component Scans – Right Clicking (Auxiliary menus)

Tree - Board: P/N: S008656 Revision: B4

Sequences Components Pins Ranges Component Scans							
Serial Number	Operator	Scan Date Time	Stimulus	Merged	Reference	Passed	
260-0		13:22 AM	None	<input type="checkbox"/>	<input checked="" type="checkbox"/>	<input checked="" type="checkbox"/>	
suspe		2:39:20 PM	None	<input type="checkbox"/>	<input type="checkbox"/>	<input type="checkbox"/>	
suspe		2:56:45 PM	None	<input type="checkbox"/>	<input type="checkbox"/>	<input type="checkbox"/>	
suspect1		Wednesday, October 29, 2014 3:34:30 PM	None	<input type="checkbox"/>	<input type="checkbox"/>	<input type="checkbox"/>	
▶ suspect 1 pass 2		Thursday, October 30, 2014 2:32:29 PM	None	<input type="checkbox"/>	<input type="checkbox"/>	<input type="checkbox"/>	

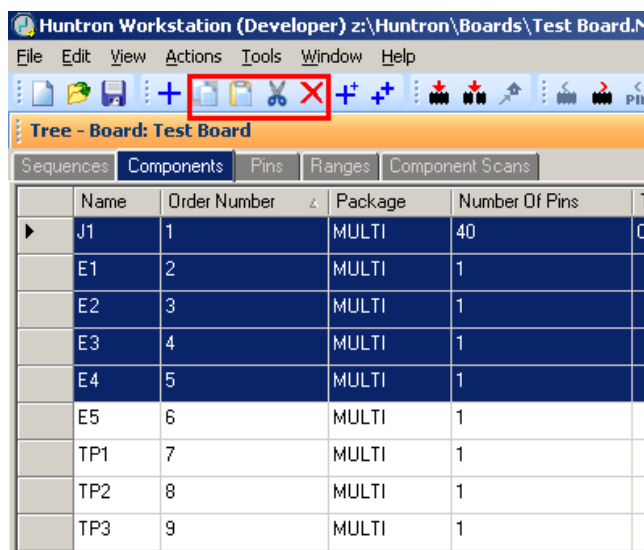
Right clicking on the Column bar of the Scans pane displays an additional menu for performing specific tasks such as sorting or globally deleting items. In the image above, the Serial Number column header was right-clicked.

Sequence/Component/Pin Editing – Right Click menus

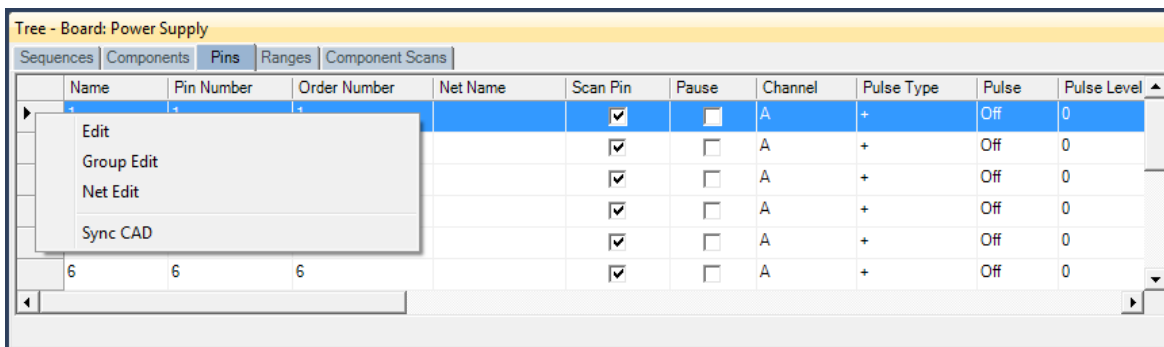


Right clicking on the Row header bar of the Tree pane displays an additional menu for performing specific tasks such as **Add New**, **Insert**, **Delete**, **Repeat**, **Build** (repeat but with name incremented by 1), **Copy**, **Paste** and **Cut**. Right clicking works at all levels of the Tree pane including Sequence, Component (shown above), Pins, Ranges and Scans.

It is also possible to select groups of components by holding the **SHIFT** or **CTRL** keys while selecting components in the Tree. To copy, paste, cut or delete groups of components, use the Copy, Paste, Cut or Delete Toolbar buttons below the main menu.



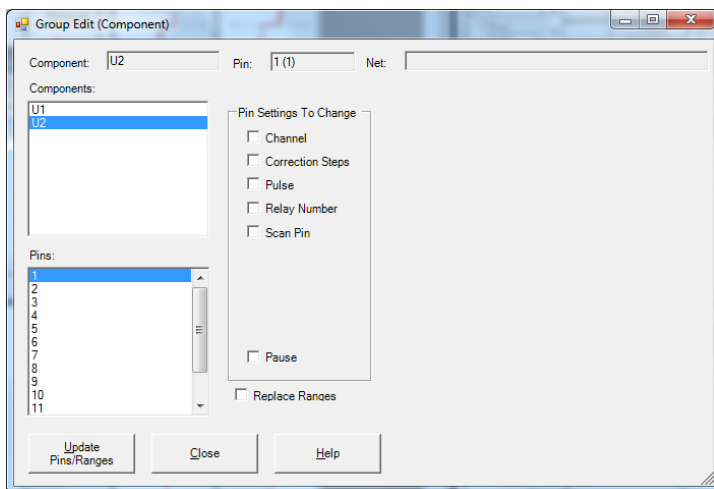
Pin Editing – Right Clicking (Auxiliary menus)



Right clicking on the Row header bar of the Tree/Pins pane allows for editing of the pin information. Select **Edit** to open the Edit window for the selected pin.

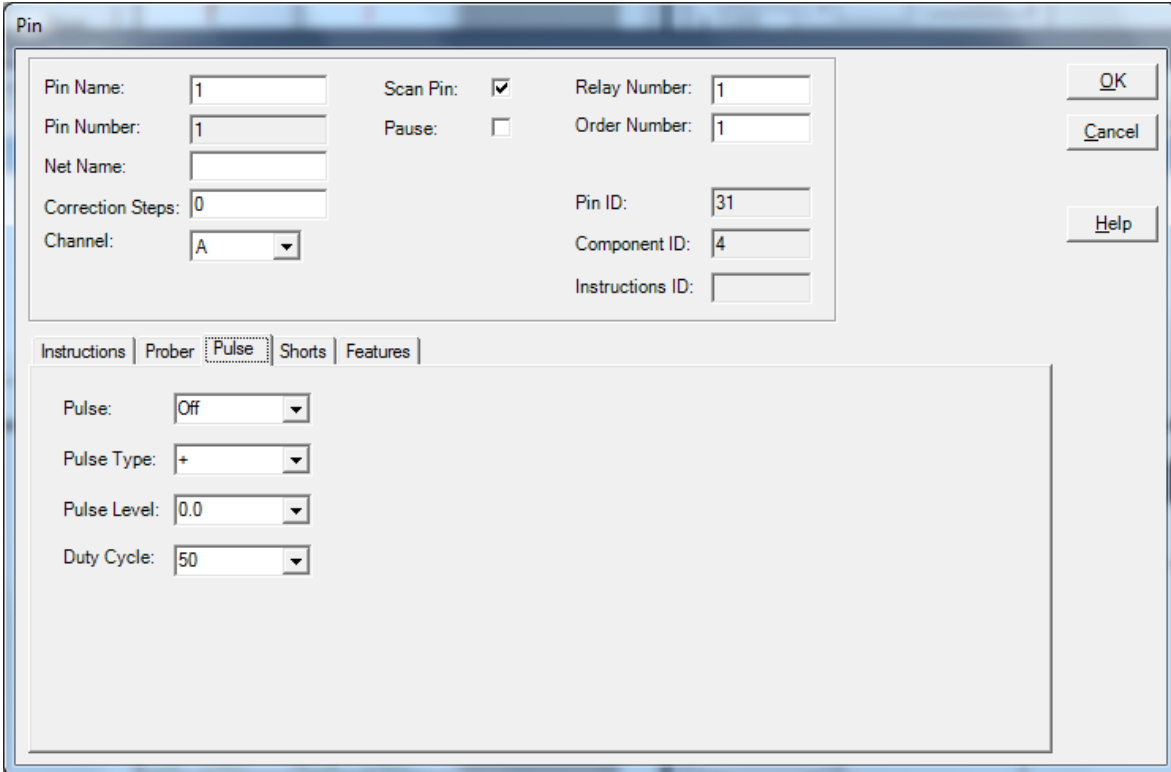
Note: Some Pin settings can also be edited directly in the Pins grid by clicking the appropriate field and modifying the setting.

Group Edit and **Net Edit** allow you make changes to the pin of a component and have those modifications also change components that have the same number of pins within the same Sequence.



Change the desired settings for the current Pin **first** then select Group Edit from the right-click menu (see above). Components with the same number of pins will be listed. Select the components and pins you want to be changed. Select the Pin Settings check box(s) for the setting(s) you want changed. Check the Ranges box to match the ranges (this will cause signatures to be deleted). Click the **Update Pins/Ranges** button to make the changes.

Pin Editing

A screenshot of the 'Pin' edit window in a software application. The window has a title bar labeled 'Pin'. Inside, there are two main sections. The top section contains input fields for 'Pin Name' (value: 1), 'Pin Number' (value: 1), 'Net Name' (empty), 'Correction Steps' (value: 0), 'Channel' (dropdown menu showing 'A'), 'Scan Pin' (checkbox checked), 'Pause' (checkbox unchecked), 'Relay Number' (value: 1), 'Order Number' (value: 1), 'Pin ID' (value: 31), 'Component ID' (value: 4), and 'Instructions ID' (empty). On the right side of this section are three buttons: 'OK', 'Cancel', and 'Help'. The bottom section has a tabbed interface with four tabs: 'Instructions', 'Prober', 'Pulse', 'Shorts', and 'Features'. The 'Pulse' tab is currently selected. It contains four settings: 'Pulse' (dropdown menu showing 'Off'), 'Pulse Type' (dropdown menu showing '+'), 'Pulse Level' (dropdown menu showing '0.0'), and 'Duty Cycle' (dropdown menu showing '50').

Pin Name:	1	Scan Pin:	<input checked="" type="checkbox"/>	Relay Number:	1
Pin Number:	1	Pause:	<input type="checkbox"/>	Order Number:	1
Net Name:					
Correction Steps:	0			Pin ID:	31
Channel:	A			Component ID:	4
				Instructions ID:	

Instructions | Prober | **Pulse** | Shorts | Features

Pulse: Off

Pulse Type: +

Pulse Level: 0.0

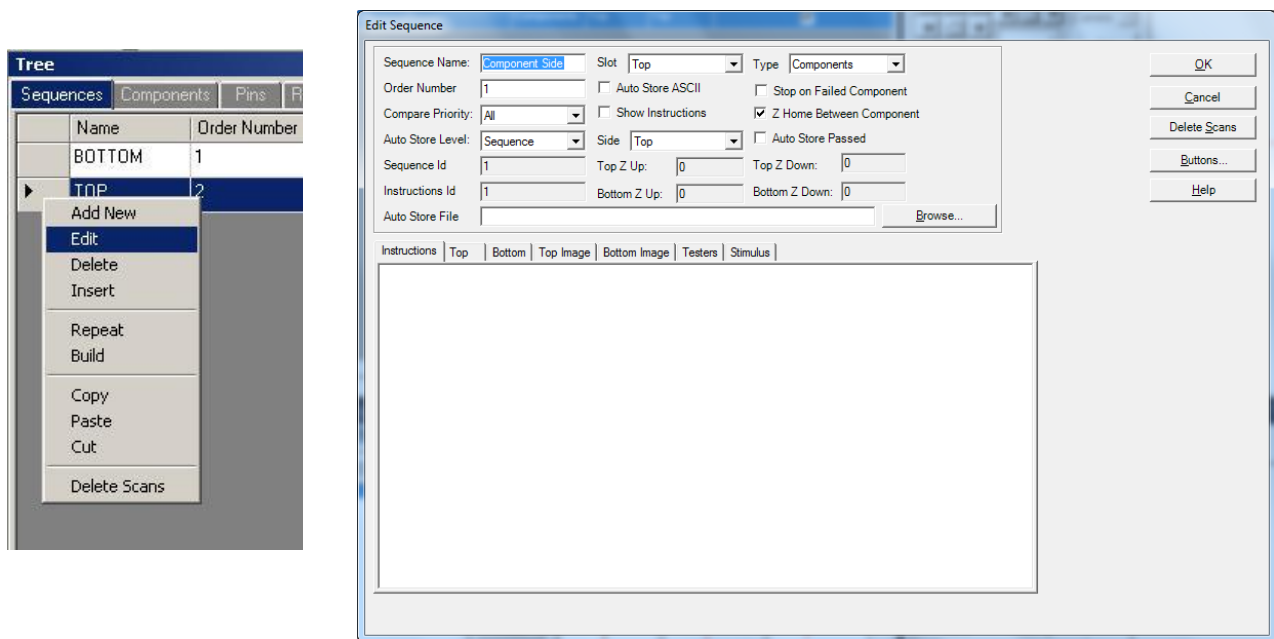
Duty Cycle: 50

Individual pin characteristics can be edited in the Pin Edit window. **Net name**, **Channel**, **Correction steps** (for Access Probers) and **Scan Pin** (enable/disable scanning of the pin) can be controlled. For ProTrack or Tracker 3200S, you can control the Pulse Generator settings used to enable the Pulse Generator during scanning.

Huntron Workstation Buttons Feature

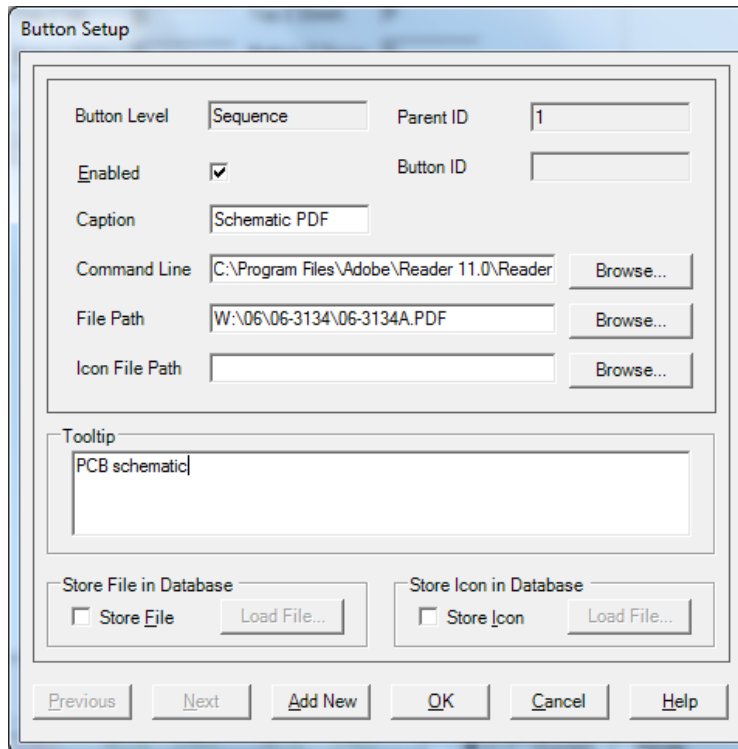
Huntron Workstation has a built-in feature that allows any Windows based program to be started by clicking a button in the Workstation toolbar. It is very easy to use and a "Button" can be attached to any Board, Sequence or Component/Net. In this example, a Button will be created for a Sequence but the process is the same for the Board and Component/Net levels.

To start, the Sequence edit window is opened by right-clicking the row header for the desired sequence. The Edit window will be displayed (see below).



Select the **Buttons...** button located on the right side of the Sequence Edit window to open the Buttons Setup window.

To configure the Button, a Caption (button name displayed in the Tools menu), Command Line (the application to be run) and File Path (the file opened by the executed application) need to be input into the corresponding fields. A File path will not always be required such as instances where a browser is started and pointed to a specific URL. In this example, the button will be configured to start the Microsoft Paint application and open a small PCB image (see image below). If desired, the icon displayed in the main window toolbar can be set by browsing to and setting a path to an .ICO (icon) file in the **Icon File Path** field. Add text that will be displayed when the cursor is placed over the Button in **Tooltip** field. To make the linked file or icon stored as part of the Board database, check the **Store File** and/or **Store Icon** checkboxes.



Click **OK** to accept the Button. To create additional Buttons, repeat this process and click the **Add New** button in the Button Setup window.

When Buttons are created, an additional toolbar will appear below the Huntron Workstation menu. This toolbar will change according to the level (board, sequence or component/net) selected.



The icon shown can be replaced by selecting an appropriate icon in the Button Setup window (the default icon is shown). Click the toolbar button to execute the Button.

Technical Support

For questions or assistance in using Huntron Workstation, contact Huntron at 800-426-9265, 425-743-3171 or email info@huntron.com.

There is online assistance for Huntron Workstation at www.huntron.com/support/workstation.htm. This page will contains software updates, a form for reporting software issues and updates to documentation such as this tutorial.